



## Bright new & Smart SDA Living

At Horizon SDA, we are helping you get into Specialised Disability Accommodation.

You™ will be able to live with dignity and respect and as much independence as possible.

We are building a brand new, purpose-designed home housing up to 4 Participants. You'll have your own bedroom with ensuite and a spare room for visitors or overnight carers to sleep.

The property will include Assistive Technology and surfaces designed to be reachable to all. Our plans are bright and modern, a far cry from care facility living.

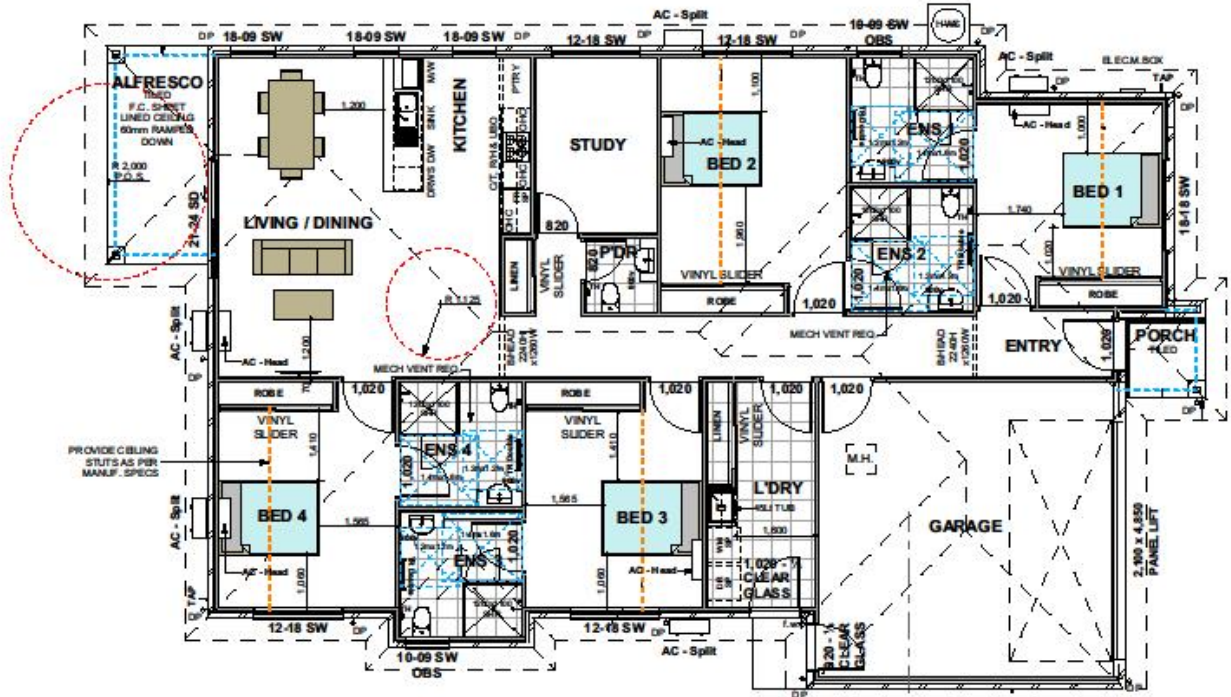
Our SDA homes aren't built in clusters, so you'll be living as a part of the community. This home is in Toowoomba, just around the corner from Homemaker shopping Centre & with a park just around the corner.

Each Horizon SDA Home features:

- Modern and striking architectural design
- A Projector Tv in the lounge
- Tv's in every bedroom
- Smart home technology in every room
- Beautiful functional kitchens with height-appropriate benchtops
- Safe and functional ensuites designed for wheelchair access
- Open-plan living areas
- Fully-maintained landscaped gardens
- The latest in assistive technology
- Emergency communication systems
- Certification to Liveable Housing Australia's™ Platinum Standard
- Fully Furnished
- Pet Friendly

Each home will be customised to suit the individual needs of tenants and feature the latest smart-home technology, including the ability to use a personal device to control lights, blinds, access doors, air-conditioning and intercom where appropriate.





## Details

- **Renting Now** Yes
- **Ready From** October 31, 2019 12:00 am
- **Design Category** Fully Accessible
- **Address** Ena St, Cotswold Hills QLD 4350, Australia
- **OOA** Yes
- **Definition** New Build
- **Type** House
- **Max Occupants** 4
- **Bedrooms** 4
- **Bathrooms** 4
- **Access** Ramp access
- **Outside** Secure backyard
- **Shared Living** Storage for personal equipment
- **Extras** Furnished